



**Noise Monitoring Result**

**Day Time (0700 - 1900hrs on normal weekdays)**

Location: M1a - Footbridge at EX-Wanchai Harbour Road Sports Centre

Date	Time	Weather	Measurement Noise Level			Baseline Level	Construction Noise Level	Limit Level
			Leq	L10	L90	Leq	Leq	Leq
Unit: dB(A), (30-min)								
7/7/2017	10:35	Cloudy	87.4	93.0	75.4	72	87	75
13/7/2017	09:35	Fine	79.3	80.9	76.7	72	78	75
20/7/2017	10:20	Fine	83.8	88.3	77.4	72	83	75
26/7/2017	09:50	Fine	85.2	87.3	81.7	72	85	75

Location: M2b - Noon-day gun area

Date	Time	Weather	Measurement Noise Level			Baseline Level	Construction Noise Level	Limit Level
			Leq	L10	L90	Leq	Leq	Leq
Unit: dB(A), (30-min)								
6/7/2017	15:50	Cloudy	70.2	73.5	66.7	68	67	75
10/7/2017	11:00	Fine	68.7	70.3	66.5	68	62	75
21/7/2017	13:05	Fine	68.5	70.1	66.4	68	61	75
26/7/2017	15:20	Fine	68.2	69.5	66.1	68	59	75

Location: M3a - Tung Lo Wan Fire Station

Date	Time	Weather	Measurement Noise Level			Baseline Level	Construction Noise Level	Limit Level
			Leq	L10	L90	Leq	Leq	Leq
Unit: dB(A), (30-min)								
4/7/2017	09:45	Cloudy	67.5	69.3	64.9	69	68	75
13/7/2017	13:50	Fine	65.1	66.7	62.9	69	65	75
21/7/2017	10:05	Fine	65.9	67.4	64.0	69	66	75
25/7/2017	08:45	Fine	65.3	67.7	62.3	69	65	75

Location: M4b - Victoria Centre

Date	Time	Weather	Measurement Noise Level			Baseline Noise Level	Construction Noise Level	Limit Level
			Leq	L10	L90	Leq	Leq	Leq
Unit: dB(A), (30min)								
4/7/2017	08:55	Cloudy	65.8	66.9	64.4	67	66	75
13/7/2017	14:35	Fine	66.9	67.8	64.6	67	67	75
21/7/2017	10:50	Fine	71.0	74.9	65.3	67	69	75
25/7/2017	09:30	Fine	66.3	67.6	64.8	67	66	75

Location: M5b - City Garden

Date	Time	Weather	Measurement Noise Level			Baseline Level	Construction Noise Level	Limit Level
			Leq	L10	L90	Leq	Leq	Leq
Unit: dB(A), (30min)								
4/7/2017	10:45	Cloudy	72.9	74.0	71.2	68	71	75
13/7/2017	15:15	Fine	72.6	73.5	71.5	68	71	75
21/7/2017	14:00	Fine	74.0	75.7	70.8	68	73	75
25/7/2017	14:25	Fine	75.1	78.1	71.1	68	74	75

Location: M6 - HK Baptist Church Henrietta Secondary School

Date	Time	Weather	Measurement Noise Level			Baseline Level	Construction Noise Level	Limit Level
			Leq	L10	L90	Leq	Leq	Leq
Unit: dB(A), (30-min)								
4/7/2017	11:30	Cloudy	66.5	67.9	64.8	71	67	70
13/7/2017	15:55	Fine	65.9	66.7	65.0	71	66	70
18/7/2017	10:00	Cloudy	65.7	68.2	62.6	71	66	65
25/7/2017	15:00	Fine	67.0	68.3	64.9	71	67	70



### Noise Monitoring Result

#### Day Time (0700 - 1900hrs on normal weekdays)

Location: M7e - International Finance Centre (Eastern End of Podium) (Reference Station)

Date	Time	Weather	Measurement Noise Level			Baseline Level	Construction Noise Level	Limit Level
			Leq	L10	L90	Leq	Leq	Leq
Unit: dB(A), (30-min)								
3/7/2017	10:15	Cloudy	64.5	67.3	63.1	67	65	N/A
10/7/2017	13:55	Fine	68.1	70.0	64.9	67	62	N/A
18/7/2017	14:05	Cloudy	69.8	72.4	65.9	67	67	N/A
24/7/2017	14:05	Fine	70.5	73.1	67.1	67	68	N/A

Location: M7w - International Finance Centre (Western End of Podium)

Date	Time	Weather	Measurement Noise Level			Baseline Level	Construction Noise Level	Limit Level
			Leq	L10	L90	Leq	Leq	Leq
Unit: dB(A), (30-min)								
4/7/2017	15:30	Cloudy	65.5	67.0	63.2	69	66	75
10/7/2017	14:30	Fine	66.7	68.5	64.2	69	67	75
18/7/2017	14:40	Cloudy	65.7	67.7	62.4	69	66	75
24/7/2017	14:40	Fine	66.7	68.7	63.8	69	67	75

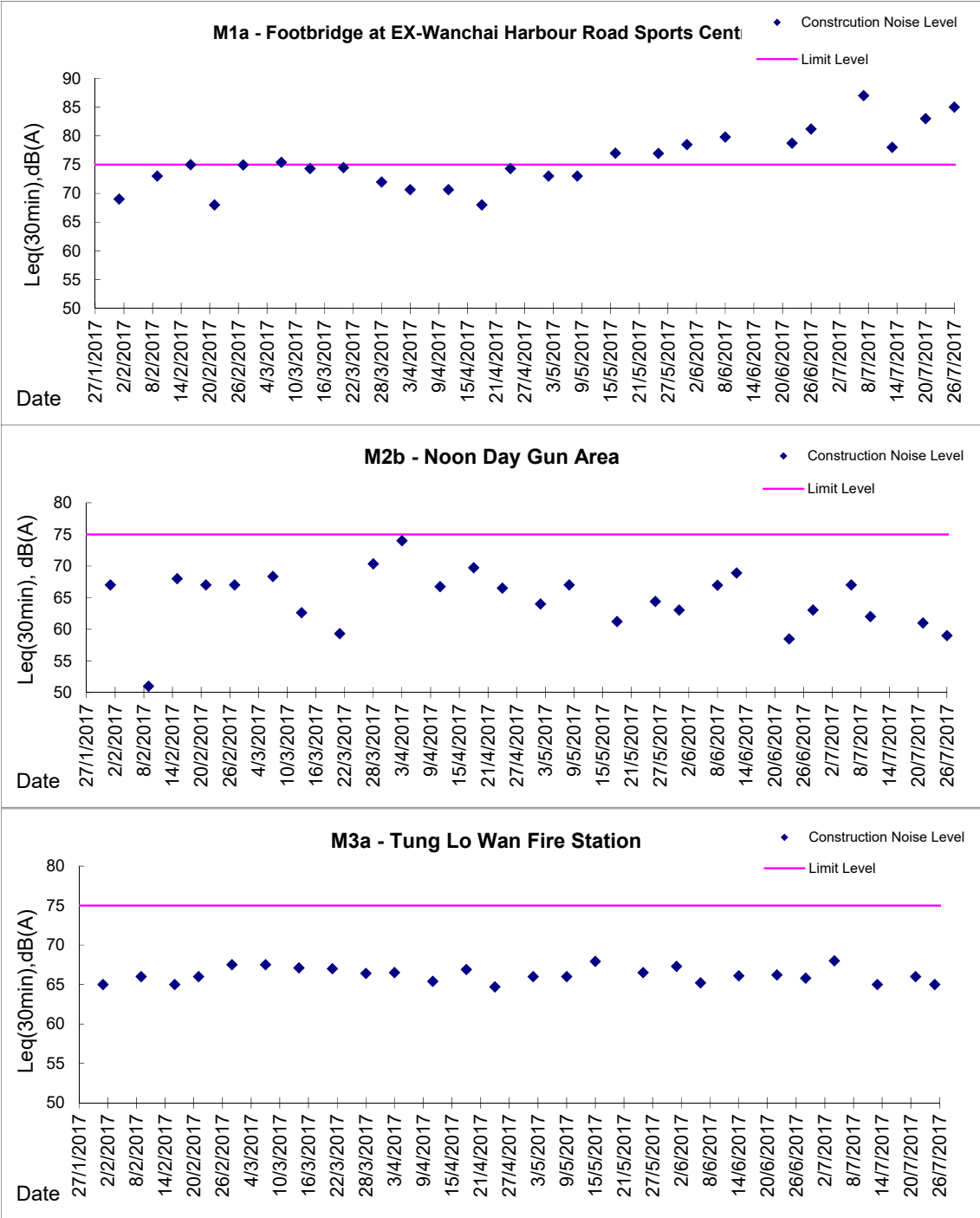
Location: M8 - City Hall

Date	Time	Weather	Measurement Noise Level			Baseline Level	Construction Noise Level	Limit Level
			Leq	L10	L90	Leq	Leq	Leq
Unit: dB(A), (30-min)								
7/7/2017	09:50	Cloudy	59.3	61.1	56.6	64	59	70
10/7/2017	15:25	Fine	58.2	60.3	55.4	64	58	70
19/7/2017	10:40	Fine	59.8	62.3	56.2	64	60	70
24/7/2017	15:55	Fine	61.3	63.4	57.5	64	61	70



**Graphic Presentation of Noise Monitoring Result**

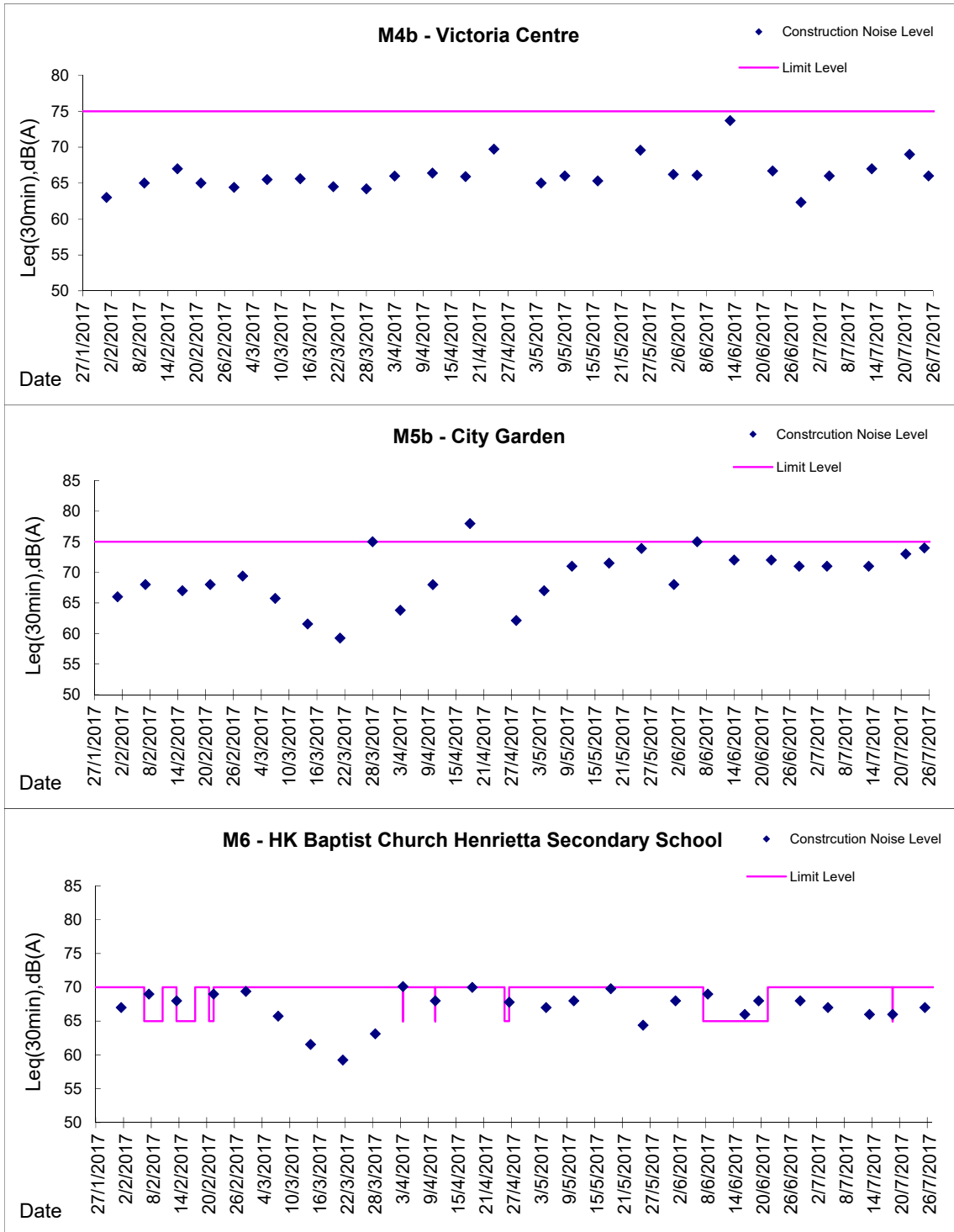
**Day Time (0700 - 1900hrs on normal weekdays)**





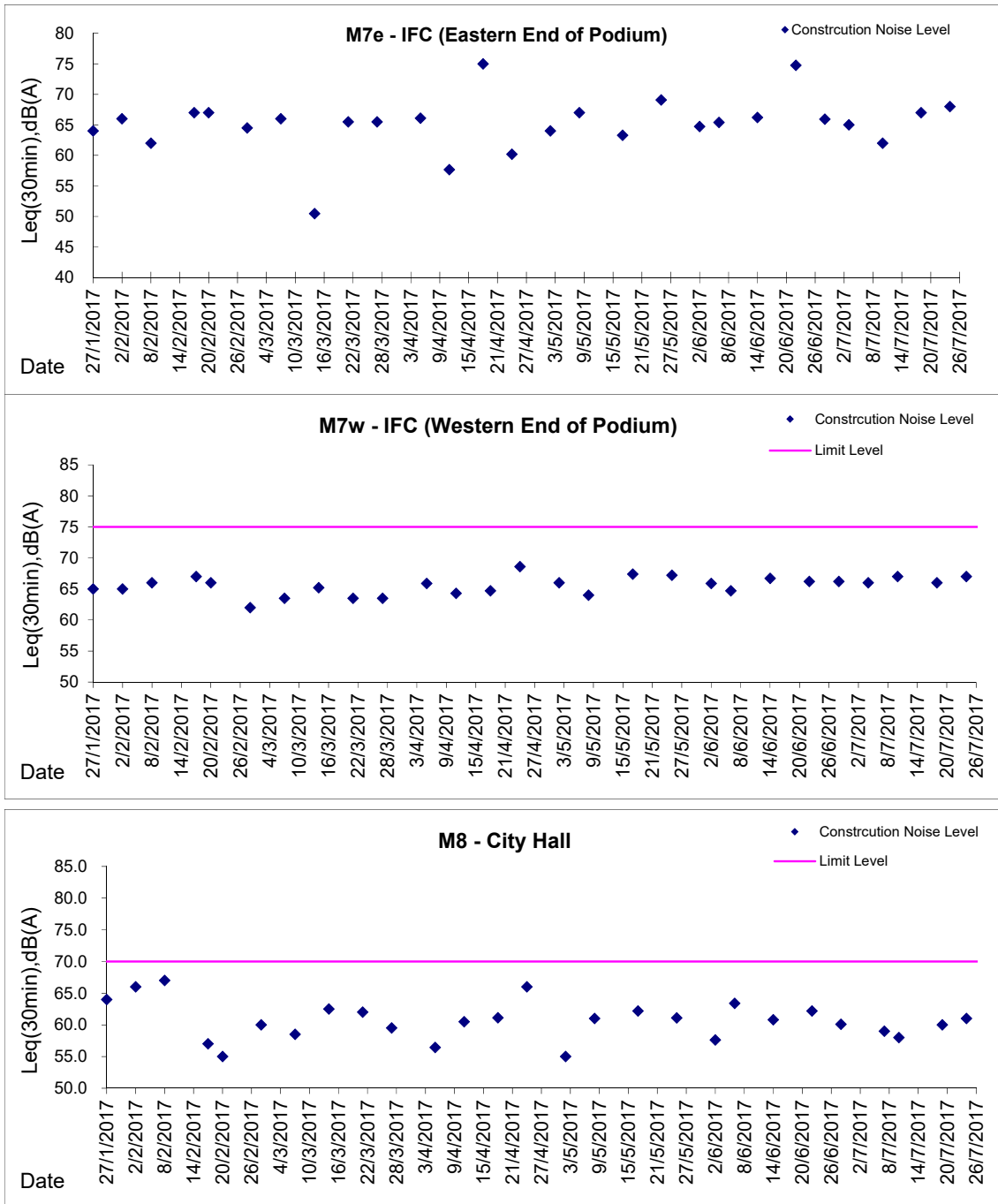
Graphic Presentation of Noise Monitoring Result

Day Time (0700 - 1900hrs on normal weekdays)



**Graphic Presentation of Noise Monitoring Result**

**Day Time (0700 - 1900hrs on normal weekdays)**



\* Remark: M7e - IFC (Eastern End of Podium) is a reference monitoring station